

BAXI



ECO COMPACT

SPARE PARTS CATALOGUE

- August 2014 -

HOW TO READ THE SPARE PARTS CATALOGUE

In the spare part catalogue, after the exploded diagrams, there are the components lists of the boilers; this is the meaning of the different columns:

Pos.	Identification number of the component in the exploded diagram of the boiler.
Description	Short description of the component.
Code	BAXI S.p.A. code of the component.
Tab. XX	XX is the exploded diagram number of the boiler taken into consideration.

From serial number Date (year and week) identifying the beginning of production of a component (taken from the serial number of the boiler).
e.g. 1205: year 2012 (1 identifies the decade 2010-2019; 2 identifies the year) – 5th week.
If the box is empty, the component is in use from the beginning of production of the boiler.

To serial number Date (year and week) identifying the end of production of a component (taken from the serial number of the boiler).
e.g. 1235: year 2012 (1 identifies the decade 2010-2019; 2 identifies the year) – 35th week.
If the box is empty, the component is still in use.

Interchangeable It identifies the interchangeability between the new component and the old one.
YES: components are interchangeable.
NO: components are not interchangeable.

TABELLA COLLEGAMENTO CODICE CALDAIA - ESPLOSO TABLEAU CONNECTION CODEX CHAUDIERE - VUE ECLATEE BOILERS CONNECTION BOARD - EXPLODED VIEW

BOILER CODE	BOILER DESCRIPTION	EXPLODED REF.
CODICE CALDAIA	DESCRIZIONE CALDAIA	RIF. ESPLOSO
CODIGO CALDERA	DESCRIPCION CALDERA	REF. EXPLOSIONADO
CODE CHAUDIÈRE	DESCRIPTION CHAUDIÈRE	RÉF. EXPLOSÉE
711573701	ECO COMPACT 1.14 F	Tab 500
721425401	ECO COMPACT 1.24	Tab 532
711287001	ECO COMPACT 1.24 F	Tab 500
711571901	ECO COMPACT 14 F	Tab 488
711572001	ECO COMPACT 18 F	Tab 488
721425501	ECO COMPACT 24	Tab 531
710506502	ECO COMPACT 24F	Tab 488

ECO COMPACT

27/08/2014

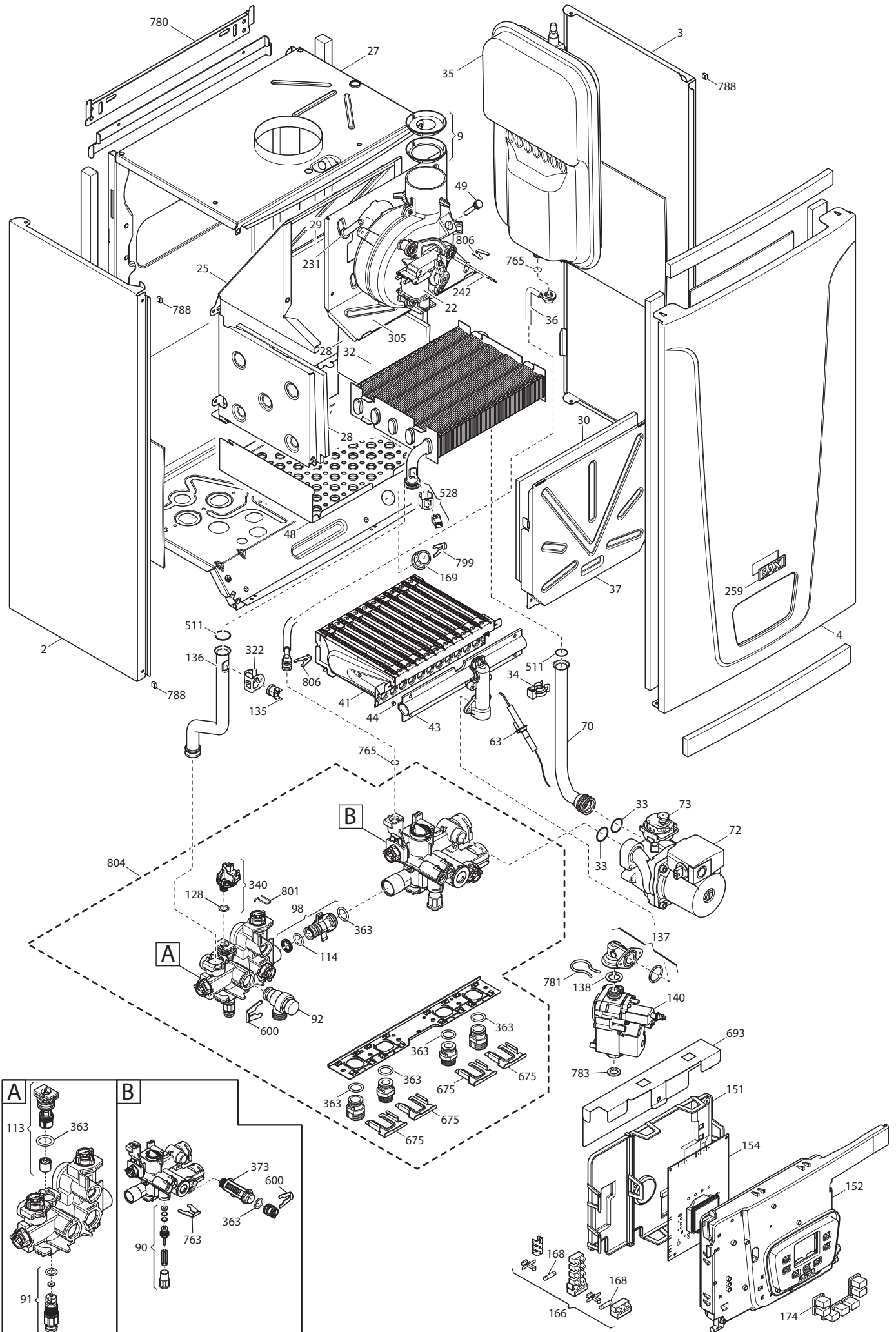
Pos	Code	Description code	ECO COMPACT 24 F	ECO COMPACT 1.24 F	ECO COMPACT 1.14 F	ECO COMPACT 1.18 F	ECO COMPACT 1.14 F	ECO COMPACT 1.14 F	ECO COMPACT 24	ECO COMPACT 1.24	ECO COMPACT 1.14 F	To serial number	From serial number	Interchangeable:
2	5698660	LEFT PANEL ASSEMBLY ECO4 ATM.												
2	710556300	LEFT PANEL ASSEMBLY	•	•	•	•	•							
3	5698650	RIGHT PANEL ASSEMBLY ECO4 ATM.							•	•				
3	710556400	RIGHT PANEL ASSEMBLY	•	•	•	•	•							
4	710822900	FRONTAL PANEL ASS.	•	•	•	•	•							
4	721426800	FRONTAL PANEL ECO5 ATM							•	•				
5	5117460	TRAVERSE SIDES CONNECTION-ATM-							•	•				
9	631760	FLUE RESTRICTOR MAIN5	•	•										
9	631950	FLUE RESTRICTOR MAIN5			•	•	•							
21	5402050	WASHER-SEALING							•	•				
22	710365100	FAN 30W	•	•	•	•	•							
25	710808100	COMBUSTION CHAMBER ASSEMBLY	•	•	•	•	•							
27	5698630	COMBUST. CHAMBER ASS. ECO4 ATM							•	•				
27	710507500	C FRAME ECO5	•	•	•	•	•							
28	5213220	INSULATING PANEL							•	•				
28	710495700	LATERAL INSULATING PANEL	•	•	•	•	•							
29	5213280	INSULATING PANEL							•	•				
29	710495600	REAR INSULATING PANEL	•	•	•	•	•							
30	5213380	FRONTAL INSULATING PANEL							•	•				
30	710391300	FRONTAL INSULATING PANEL	•	•	•	•	•							
31	615370	COMBUST.CHAMBER FRONTAL PANEL							•	•				
32	5677660	PRIMARY EXCHANGER WITH CLIPS							•	•				
32	710592300	H2O/EXCHANGER ECO5	•	•	•	•	•							
33	710963000	OR 21,5X3 EP70 TFL	•	•	•	•	•	•	•	•				
34	5113650	PRIMARY EXCHANGER FIXING CLIP	•	•	•	•	•	•	•	•				
35	5693900	RECT.EXPANSION VESSEL 6l-CIMM-							•	•				
35	710418200	EXPANSION VESSEL 8L CIMM	•	•	•	•	•							
36	5698830	PIPE EXPANSION VESSEL							•	•				
36	711412700	EXPANSION VESSEL PIPE ECO5	•	•	•	•	•							
37	710795800	SEALED CHAMBER FRONT PANEL	•	•	•	•	•							
41	5663710	BURNER ASSEMBLY (13 ELEM.)							•	•				
41	710516000	BURNER 11 ELEMENTS	•	•	•	•	•							
43	5698690	GAS RAMP 13HOLES/INJECT. d1,18							•	•				
43	710807300	GAS RAMP 11 INJECTORS	•	•	•	•	•							
44	5209150	INJECTOR D. 1,18 MM			•	•	•							
44	5214470	INJECTOR diameter 1,35 mm	•	•										
44	5680020	TRANSFORMATION KIT G31							•	•				
44	711368500	KIT TRANSF. G31 11X0,77			•	•	•							

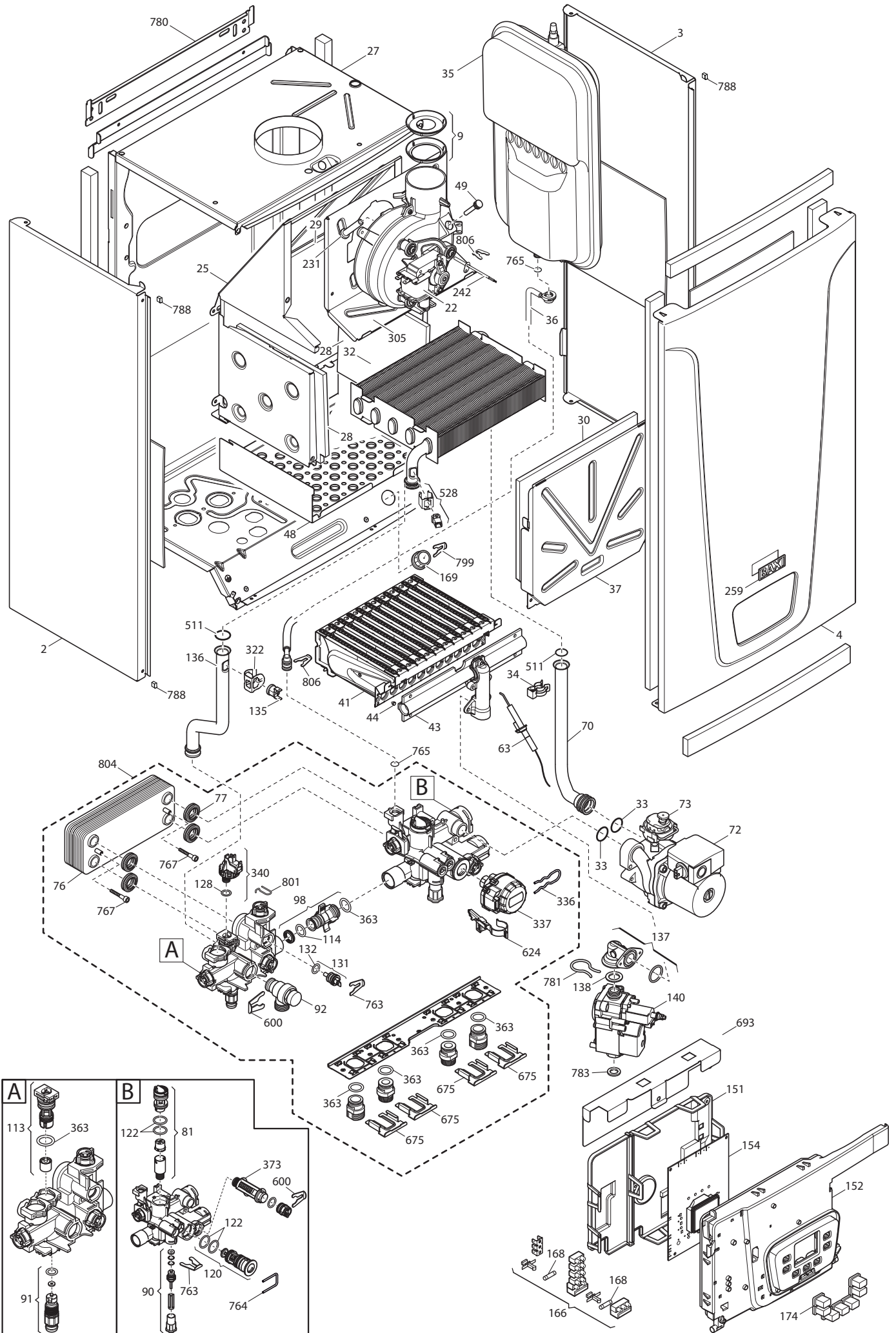
ECO COMPACT

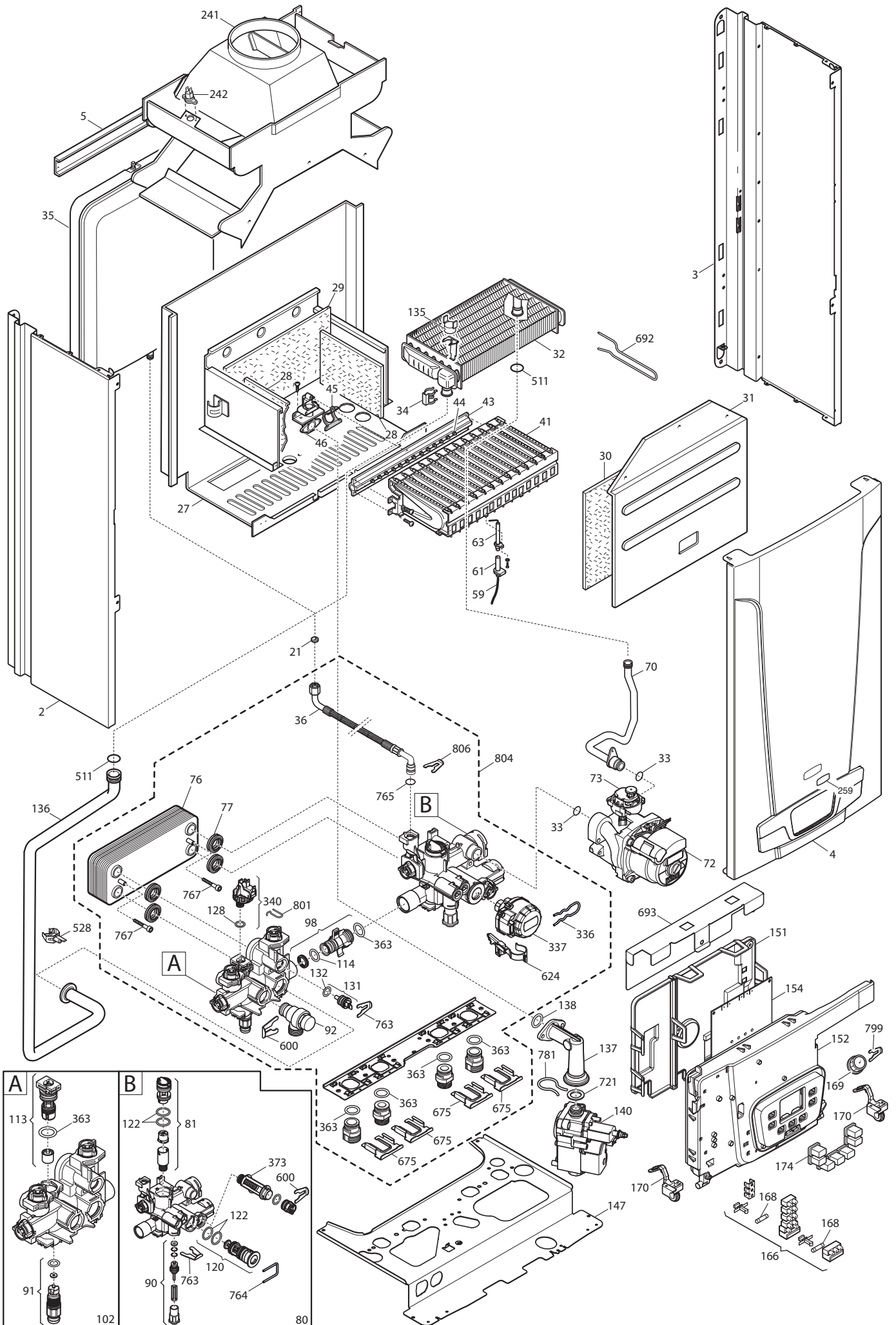
27/08/2014

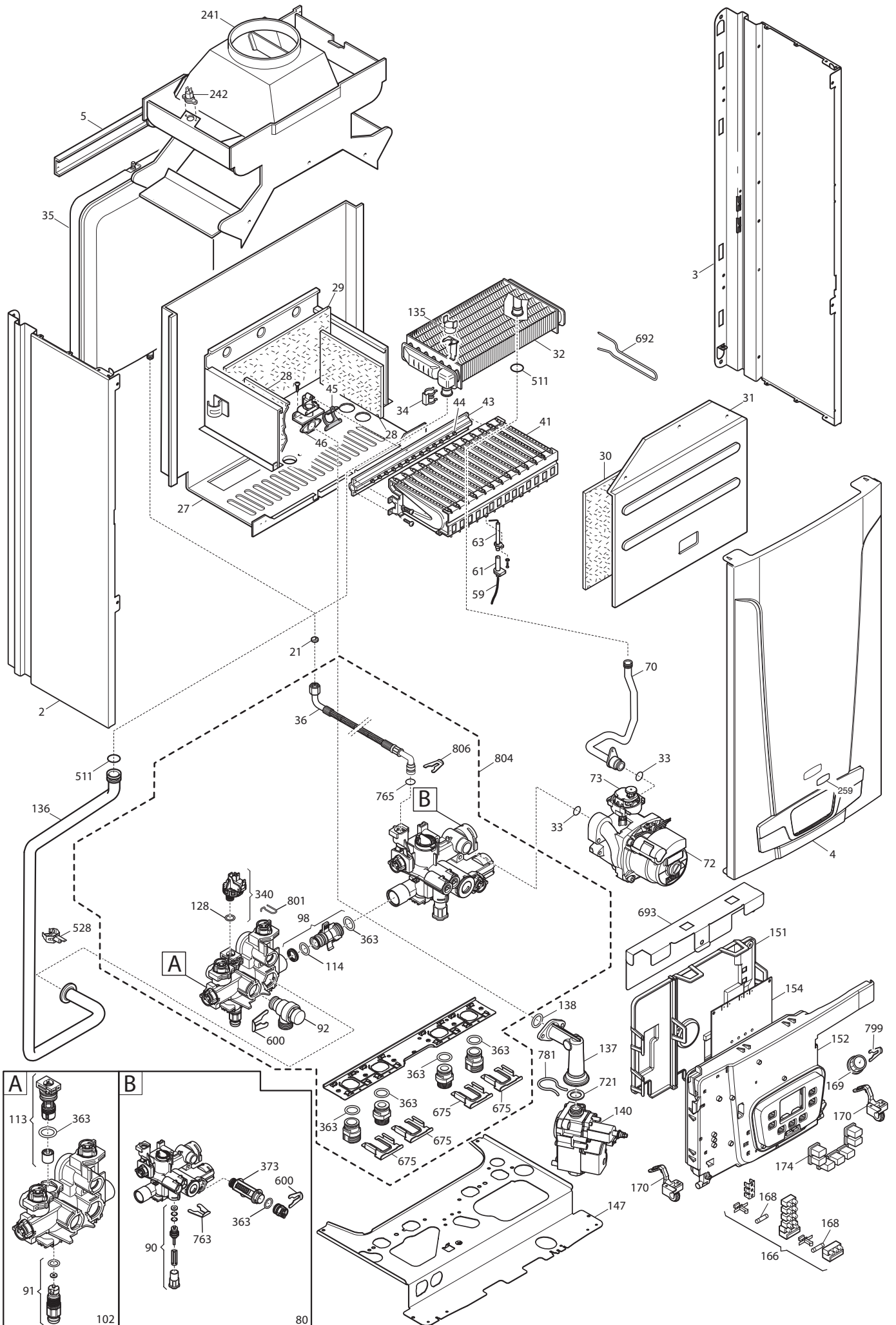
Pos	Code	Description code	ECO COMPACT 24F	710506502	ECO COMPACT 1.24 F	711287001	ECO COMPACT 18 F	711572001	ECO COMPACT 14 F	711571901	ECO COMPACT 1.14 F	711573701	ECO COMPACT 24	721425501	ECO COMPACT 1.24	721425401	To serial number	From serial number	Interchangeable:
44	711368600	KIT TRANSF. G31 11X0,85	•	•															
45	5407940	GASKET-BURNER MANIFOLD												•	•				
46	5657180	ADAPTOR-MANIFOLD												•	•				
48	710733000	BURNER TRAY	•	•	•	•	•	•											
49	5409520	HOSE ADAPTER CAP	•	•	•	•	•	•											
59	710696300	IGNITION CABLE L=350	•	•	•	•	•	•											
59	721426600	IGNITION CABLE												•	•				
61	5404920	INSULATION BOOT-ELECTRODES	•	•	•	•	•	•											
61	5407830	INSULATION BOOT - ELECTRODE												•	•				
63	8422570	ELECTRODE - IGNITION												•	•				
63	711333500	ELECTRODE	•	•	•	•	•	•											
70	5698720	PIPE PUMP/EXCHANGER ATM BITRON												•	•				
70	710593900	PIPE PUMP/EXCHANGER	•	•	•	•	•	•											
72	710820200	PUMP WILO 5M WHITE GOOD	•	•	•	•	•	•	•	•	•	•	•	•	•				
73	710139500	AUTOMATIC AIR VENT	•	•	•	•	•	•	•	•	•	•	•	•	•				
76	5686660	DHW PLATE EXCHANGER 10 PLATES	•		•	•								•					
77	5404520	DHW PLATE EXCHANGER GASKET	•		•	•								•					
80	711033700	COMBI HYDROBLOCK RETURN BIT. ECO												•	•				
81	710048100	DHW CARTRIDGE	•		•	•								•					
90	710046600	FILLING TAP ASSY	•	•	•	•	•	•	•	•	•	•	•	•	•				
91	710045500	DISCHARGE TAP CONNECTION	•	•	•	•	•	•	•	•	•	•	•	•	•				
92	710071200	SAFETY VALVE 3 bar NOVASFER												•	•				
92	710109400	HYDRAULIC SAFETY VALVE 3 BAR	•	•	•	•	•	•											
98	710046300	BY-PASS CONNECTION ASSY	•	•	•	•	•	•	•	•	•	•	•	•	•				
102	711033600	COMBI HYDROBLOCK DELIVERY BIT. EC												•	•				
113	710048300	BY-PASS CARTRIDGE	•	•	•	•	•	•	•	•	•	•	•	•	•				
114	710046400	O-RING d.15,54X2,62	•	•	•	•	•	•	•	•	•	•	•	•	•				
120	710144100	3WV CARTRIDGE	•		•	•								•					
122	710047800	O-RING d.23,47X2,62	•		•	•								•					
128	710048800	O-RING d.8,9X1,9	•	•	•	•	•	•	•	•	•	•	•	•	•				
131	710056200	NTC SENSOR HONEYWELL	•		•	•										1422			
131	721309400	NTC SENSOR NICKEL	•		•	•											1423	YES	
131	721309400	NTC SENSOR NICKEL												•					
132	710049100	O-RING d.11,91X2,62 OR115	•		•	•								•					
135	9951610	LIMIT THERMOSTAT 105°C	•	•	•	•	•	•	•	•	•	•	•	•	•				
136	5698740	PIPE EXCH./H.INLET ECO4 ATM												•	•				
136	711159000	PIPE EXCHANG./INLET ECO5	•	•	•	•	•	•											
137	710585800	CONNECTION GAS VALVE/OR	•	•	•	•	•	•											
137	721345600	GAS VALVE CONNECTING ELEMENT												•	•				
138	710733100	O RING 22.22x2.62	•	•	•	•	•	•	•	•	•	•	•	•	•				
140	710660400	GAS VALVE VK4105M	•	•	•	•	•	•	•	•	•	•	•	•	•				
147	711457300	CONNECTION TRAVERSE												•	•				
151	710654600	BOX COVER	•	•	•	•	•	•	•	•	•	•	•	•	•				

Tab 500









BAXI

BAXI S.p.A.
Via Trozzetti, 20
36061 BASSANO DEL GRAPPA (VI)
ITALY
Tel. +390424517111
Telefax +390424517379
E-mail. service@baxi.it