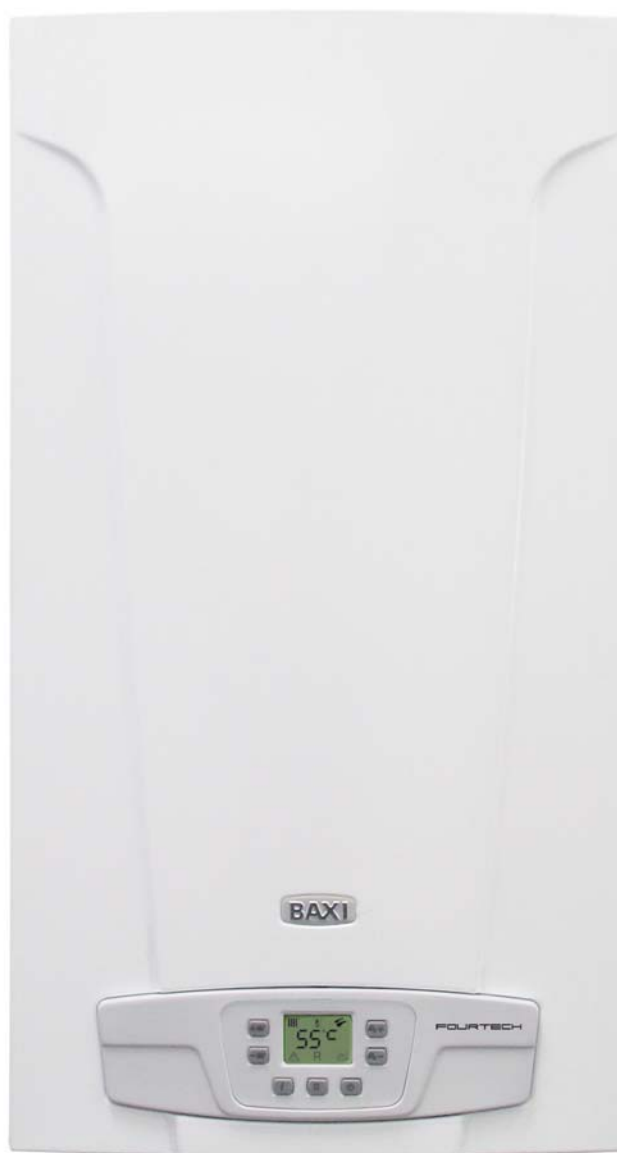


BAXI



FOURTECH

SPARE PARTS CATALOGUE

- April 2009 -

HOW TO READ THE SPARE PARTS CATALOGUE

In the spare part catalogue, after the exploded diagrams, there are the components lists of the boilers; this is the meaning of the different columns:

Pos.	Identification number of the component in the exploded diagram of the boiler.
Description	Short description of the component.
Code	BAXI S.p.A. code of the component.
Tab. XX	XX is the exploded diagram number of the boiler taken into consideration.
From serial number	Date (year and week) identifying the beginning of production of a component (taken from the serial number of the boiler). e.g. B005: year 2000 (B identifies the decade 2000-2009; 0 identifies the year) – 5th week. If the box is empty, the component is in use from the beginning of production of the boiler.
To serial number	Date (year and week) identifying the end of production of a component (taken from the serial number of the boiler). e.g. B012: year 2000 (B identifies the decade 2000-2009; 0 identifies the year) – 12th week. If the box is empty, the component is still in use.
Interchangeable	It identifies the interchangeability between the new component and the old one. YES: components are interchangeable. NO: components are not interchangeable.

BOILERS CONNECTION BOARD - EXPLODED VIEW

TABELLA COLLEGAMENTO CODICE CALDAIA - ESPLOSO

TABLERO UNIÓN CALDERA - EXPLOSIONADO

TABLEAU CONNECTION CODEX CHAUDIERE - VUE ECLATEE

BOILER CODE	BOILER DESCRIPTION	EXPLODED REF.
CODICE CALDAIA	DESCRIZIONE CALDAIA	RIF. ESPLOSO
CODIGO CALDERA	DESCRIPCION CALDERA	REF. EXPLOSIONADO
CODE CHAUDIÈRE	DESCRIPTION CHAUDIÈRE	RÉF. EXPLOSÉE
CSB461143680	FOURTECH 1.14 -BAXI-	Tab 375
CSB461243680	FOURTECH 1.24 -BAXI-	Tab 375
CSB462243680	FOURTECH 24 -BAXI-	Tab 366
CSB465143680	FOURTECH 1.14 F -BAXI-	Tab 376
CSB465243680	FOURTECH 1.24 F -BAXI-	Tab 376
CSB466243680	FOURTECH 24 F -BAXI-	Tab 365

FOURTECH

Pos	Code	Description code	CSB461143680	CSB461243680	CSB462243680	CSB465143680	CSB465243680	CSB466243680	To serial number	From serial number	Interchan- geable:
			1.14	1.24	24	1.14 F	1.24 F	24 F			
2	5698660	LEFT PANEL ASSEMBLY ECO4 ATM.	•	•	•						
2	5698680	LEFT PANEL ASSEMBLY ECO4 FF				•	•	•			
3	5698650	RIGHT PANEL ASSEMBLY ECO4 ATM.	•	•	•						
3	5698670	RIGHT PANEL ASSEMBLY ECO4 FF				•	•	•			
4	628820	FRONTAL PANEL ASS. ECO4 ATM	•	•	•						
4	5117890	FRONTAL PANEL ECO4 BAXI				•	•	•			
5	5117420	TRAVERSE SIDES CONNECTION FF				•	•	•			
5	5117460	TRAVERSE SIDES CONNECTION-ATM-	•	•	•						
8	5408080	PRESSURE SWITCH PIPE L=270				•	•	•			
9	5117740	FLUE REDUCTION d.78mm				•	•	•			
12	5108690	PLATE BLANKING				•	•	•			
13	5407400	SUCTION CAP GASKET				•	•	•			
17	5214290	BEND FLUE EMISSIONS ECO4				•	•	•			
18	5409580	PRESSURE SENSING VENTURI 80E				•					
18	5413850	PRESS.SENS.VENTURI SINGLE TAP					•	•			
21	5402050	WASHER-SEALING	•	•	•	•	•	•			
22	5678500	FAN 31W				•					
22	5682150	FAN					•	•			
23	628770	FLUE PRESS.SWITCH 70-60Pa HUBA					•	•			
23	628800	FLUE PRESS.SWITCH 50-39Pa HUBA				•					
23	5640000	PRESSURE SWITCH				•					
23	5663820	PRESSURE SWITCH 80					•	•			
24	5407930	PIPE - VALVE COMPENSATION				•	•	•			
25	5113810	CONVEYOR ASSEMBLY				•	•	•			
27	5698630	COMBUST. CHAMBER ASS. ECO4 ATM		•	•						
27	5698640	COMBUST. CHAMBER ASS. ECO4 FF				•	•	•			
27	5699130	COMB.CHAMBER ASS.ECO4 ATM 14KW	•								
28	5213210	INSULATING PANEL				•	•	•			
28	5213220	INSULATING PANEL	•	•	•						
29	5213280	INSULATING PANEL	•	•	•	•	•	•			
30	5213370	INSULATING PANEL				•	•	•			
30	5213380	FRONTAL INSULATING PANEL	•	•	•						
31	612970	COMB. CHAMBER FRONTAL PANEL				•	•	•			
31	615370	COMBUST.CHAMBER FRONTAL PANEL	•	•	•						
32	5677660	PRIMARY EXCHANGER WITH CLIPS	•	•	•	•	•	•			
33	5403130	O-RING 22 x 3	•	•	•	•	•	•			
34	5113650	PRIMARY EXCHANGER FIXING CLIP	•	•	•	•	•	•			
35	5693900	RECT.EXPANSION VESSEL 6I-CIMM-	•	•	•						
35	5695230	CIRC.EXPANS.VESSEL 6I ZILMET				•	•	•			
36	5698830	PIPE EXPANSION VESSEL	•	•	•	•	•	•			
37	5663830	SEALED CHAMBER FRONT PANEL				•	•	•			
38	5401610	VIEWING WINDOW GASKET				•	•	•			

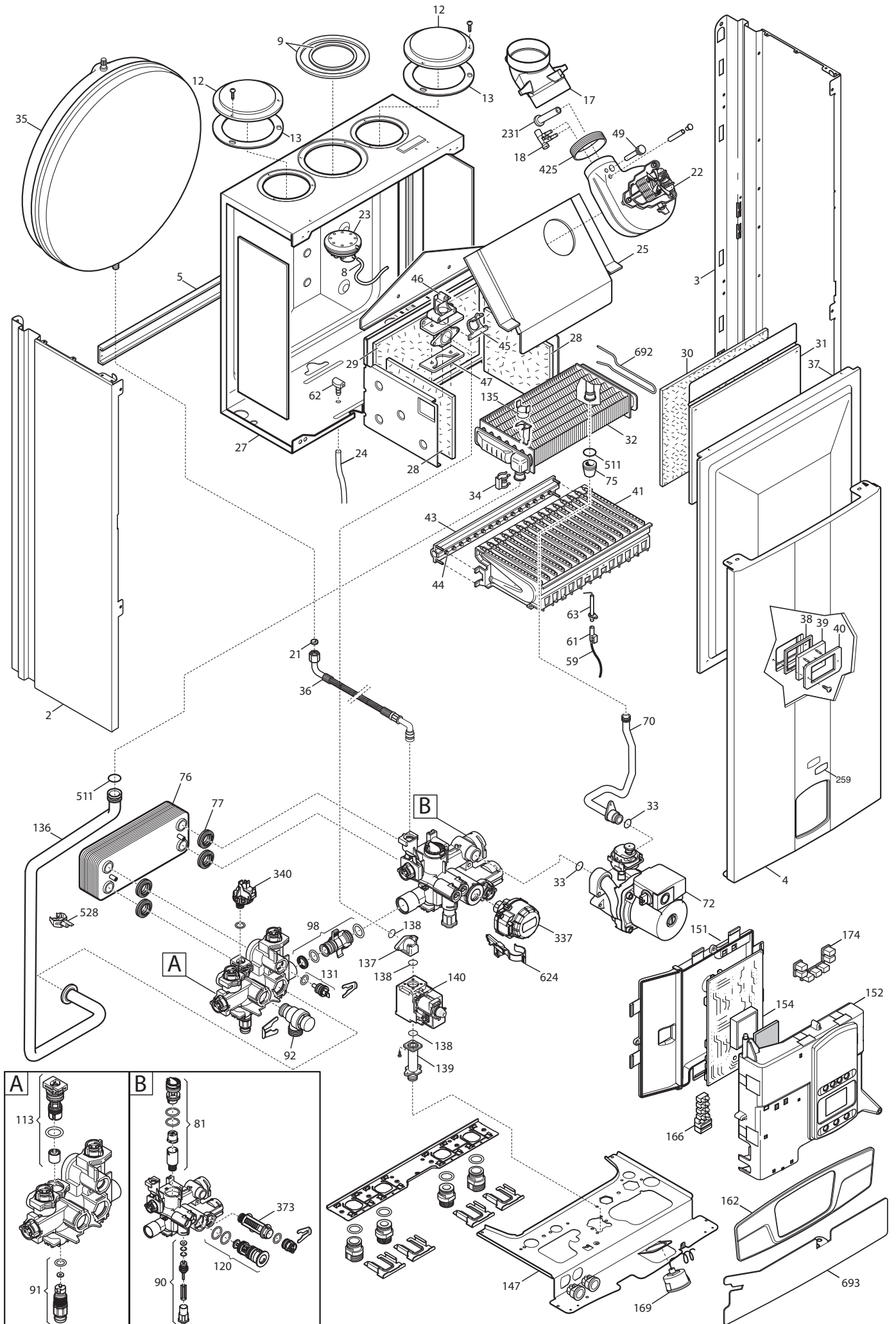
FOURTECH

Pos	Code	Description code	CSB461143680	CSB461243680	CSB46243680	CSB465143680	CSB465243680	CSB466243680	To serial number	From serial number	Interchangeable:
			1.14	1.24	24	1.14 F	1.24 F	24 F			
39	5203930	VIEWING WINDOW				•	•	•			
40	5103360	SURROUND - VIEWING WINDOW				•	•	•			
41	5663710	BURNER ASSEMBLY (13 ELEM.)		•	•		•	•			
41	5665980	BURNER ASSEMBLY PERFORMA 12e	•			•					
43	5665960	GAS RAMP 10 HOLES d.1,18	•			•					
43	5698690	GAS RAMP 13HOLES/INJECT. d1,18		•	•						
43	5698700	GAS RAMP 13HOLES/INJECT. d1,28					•	•			
44	5209150	INJECTOR D. 1,18 MM	•	•	•						
44	5210760	INJECTOR D. 1,28 NG				•	•	•			
45	5407940	GASKET-BURNER MANIFOLD	•	•	•	•	•	•			
46	5657180	ADAPTOR-MANIFOLD	•	•	•	•	•	•			
47	5407810	GASKET-MANIFOLD ADAPTOR				•	•	•			
49	5409520	HOSE ADAPTER CAP				•	•	•			
59	8612400	IGNITION CABLE L=250 ECO4	•	•	•	•	•	•			
61	5407830	INSULATION BOOT - ELECTRODE	•	•	•	•	•	•			
62	5409570	SEALED CHAMBER HOSE ADAPTER				•	•	•			
63	8422570	ELECTRODE - IGNITION	•	•	•	•	•	•			
70	5698720	PIPE PUMP/EXCHANGER ATM BITRON	•	•	•						
70	5698730	PIPE PUMP/EXCHANGER FF BITRON				•	•	•			
72	5698260	PUMP ONE SPEED 5meters WILO	•	•	•	•	•	•			
75	5404670	GROMMET - PIPE ASSEMBLY				•	•	•			
76	5686660	DHW PLATE EXCHANGER 10 PLATES			•			•			
77	5404520	DHW PLATE EXCHANGER GASKET			•			•			
81	710048100	DHW CARTRIDGE			•			•			
90	710046600	FILLING TAP ASSY	•	•	•	•	•	•			
91	710045500	DISCHARGE TAP CONNECTION	•	•	•	•	•	•			
92	710071200	SAFETY VALVE 3 bar NOVASFER	•	•	•	•	•	•			
98	710046300	BY-PASS CONNECTION ASSY	•	•	•	•	•	•			
113	710048300	BY-PASS CARTRIDGE	•	•	•	•	•	•			
120	710047700	3WV CARTRIDGE			•			•			
131	710046800	BITRON DHW NTC SENSOR			•			•			
135	9951610	LIMIT THERMOSTAT 105°C	•	•	•	•	•	•			
136	5698740	PIPE EXCH./H.INLET ECO4 ATM	•	•	•						
136	5698750	PIPE EXCHANGER/H.INLET ECO4 FF				•	•	•			
137	5214270	GAS V. ELBOW OUTLET OPEN FLUE	•	•	•						
137	5214280	GAS VALVE ELBOW OUTLET FF				•	•	•			
138	5402010	O RING 22.22x2.62	•	•	•	•	•	•			
139	5206620	CONNECTOR-GAS VALVE INLET	•	•	•	•	•	•			
140	5653610	GAS VALVE - SIGMA 845048	•	•	•	•	•	•			
140	5665220	GAS VALVE HON.	•	•	•	•	•	•			
147	5698770	CONNECTION TRAVERSE ECO4	•	•	•	•	•	•			
151	5413650	CONTROL PANEL COVER ECO4	•	•	•	•	•	•			

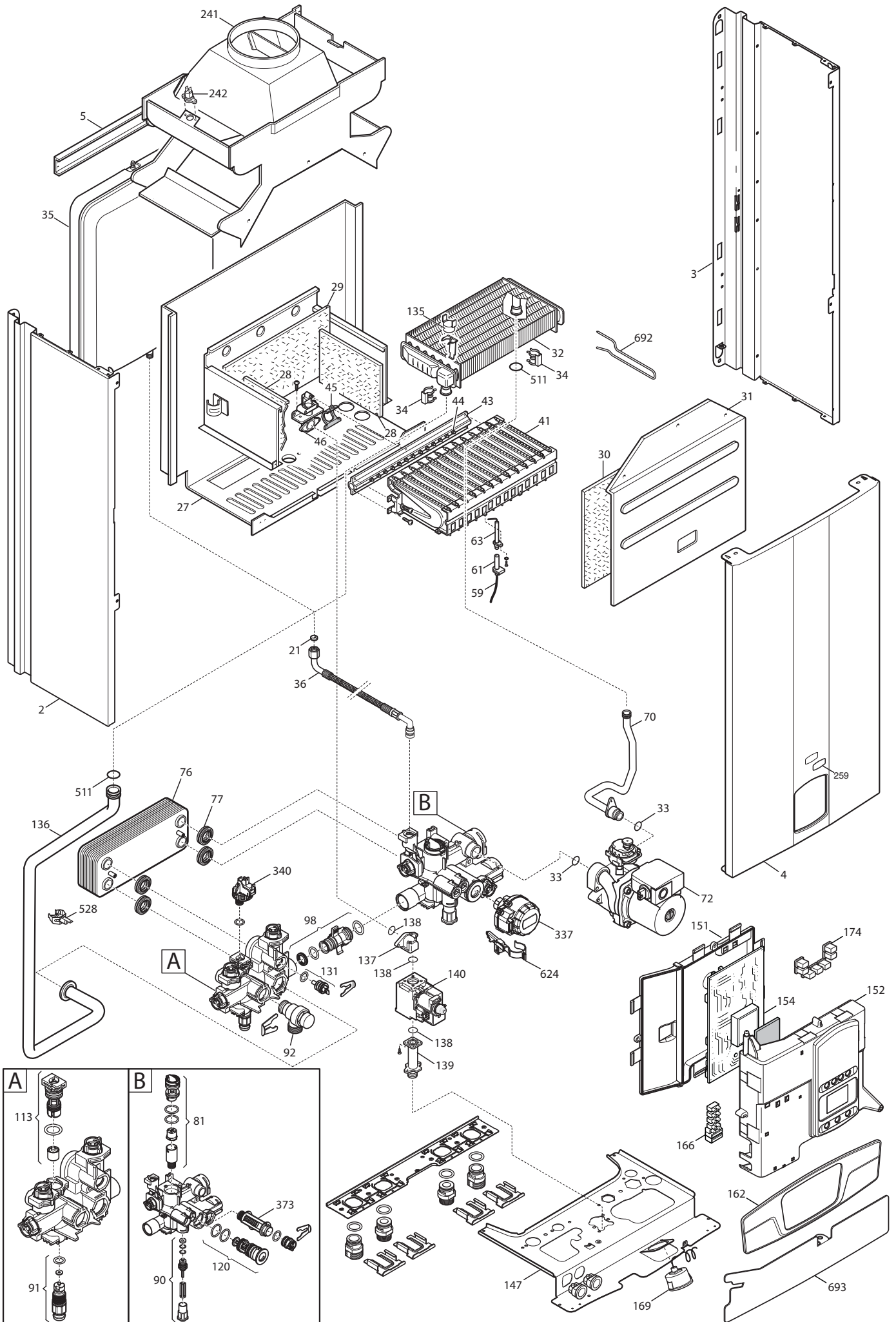
FOURTECH

Pos	Code	Description code	CSB461143680	CSB461243680	CSB462243680	CSB465143680	CSB465243680	CSB466243680	To serial number	From serial number	Interchangeable:
			1.14	1.24	24	1.14 F	1.24 F	24 F			
152	5698880	CONTROL PANEL ECO4 BAXI	•	•	•	•	•	•			
154	5702450	PCB GROUP BERT&PART HDIMS 02	•	•	•	•	•	•			
162	5698910	PANEL PLATE ECO4 BAXI	•	•	•	•	•	•			
166	5688430	TERM.BOARD/DOUBLE FUSE HOLDER	•	•	•	•	•	•			
169	8922460	MANOMETER d.40 XGR. BITRON	•	•	•	•	•	•			
174	5414010	KEYBOARD ECO4 BAXI	•	•	•	•	•	•			
231	5409480	FLUE INTAKE				•	•	•			
241	5668420	CONVEYOR ASSEMBLY		•	•						
241	5678060	FLUE CHAMBER ASSEMBLY 14KW	•								
242	606930	FLUE SAFETY THERMOSTAT 60C	•								
242	616160	FLUE SAFETY THERMOSTAT 70ø		•	•						
259	5681120	BRAND BAXI LUNA3	•	•	•	•	•	•			
337	710047300	3WV MOTOR HEAD			•			•			
340	710048500	ON/OFF CH PRESSURE SWITCH	•	•	•	•	•	•			
373	710047100	CH FILTER	•	•	•	•	•	•			
425	5412270	GASKET FAN HT				•	•	•			
511	5404600	O.R. 17,86x2,62	•	•	•	•	•	•			
528	8435500	NTC SENSOR D18-ITS2410201/0-	•	•	•	•	•	•			
624	710046200	HALL SENSOR ASSY			•			•			
692	5114360	PRIMARY EXCHANGER CLIPS	•	•	•	•	•	•			
693	5117440	PRINTED CNTR. PANEL PROTECTION	•	•	•	•	•	•			
999	8414540	CABLE ROOM TH	•	•	•	•	•	•			
999	8414620	POWER CABLE	•	•	•	•	•	•			
999	8419040	CABLE - EARTH	•	•	•	•	•	•			
999	8513650	LOW VOLTAGE WIRING ECO4 ATM	•	•	•						
999	8513660	FAN WIRING ECO4				•	•	•			
999	8513670	LOW VOLTAGE WIRING ECO4 FF				•	•	•			
999	8513890	HIGH VOLTAGE WIRING ECO4 SIT			•			•			
999	8513900	HIGH VOLTAGE WIRING ECO4 HON.			•			•			
999	8513910	LOW VOLTAGE WIRING ECO4 BITRON			•			•			
999	8513930	HIGH VOLT.WIRING ECO4 SIT MON.	•	•		•	•				
999	8513940	HIGH VOLT.WIRING ECO4 HON.	•	•		•	•				
999	8513950	LOW VOLT.WIRING ECO4 MONOTHER.	•	•		•	•				

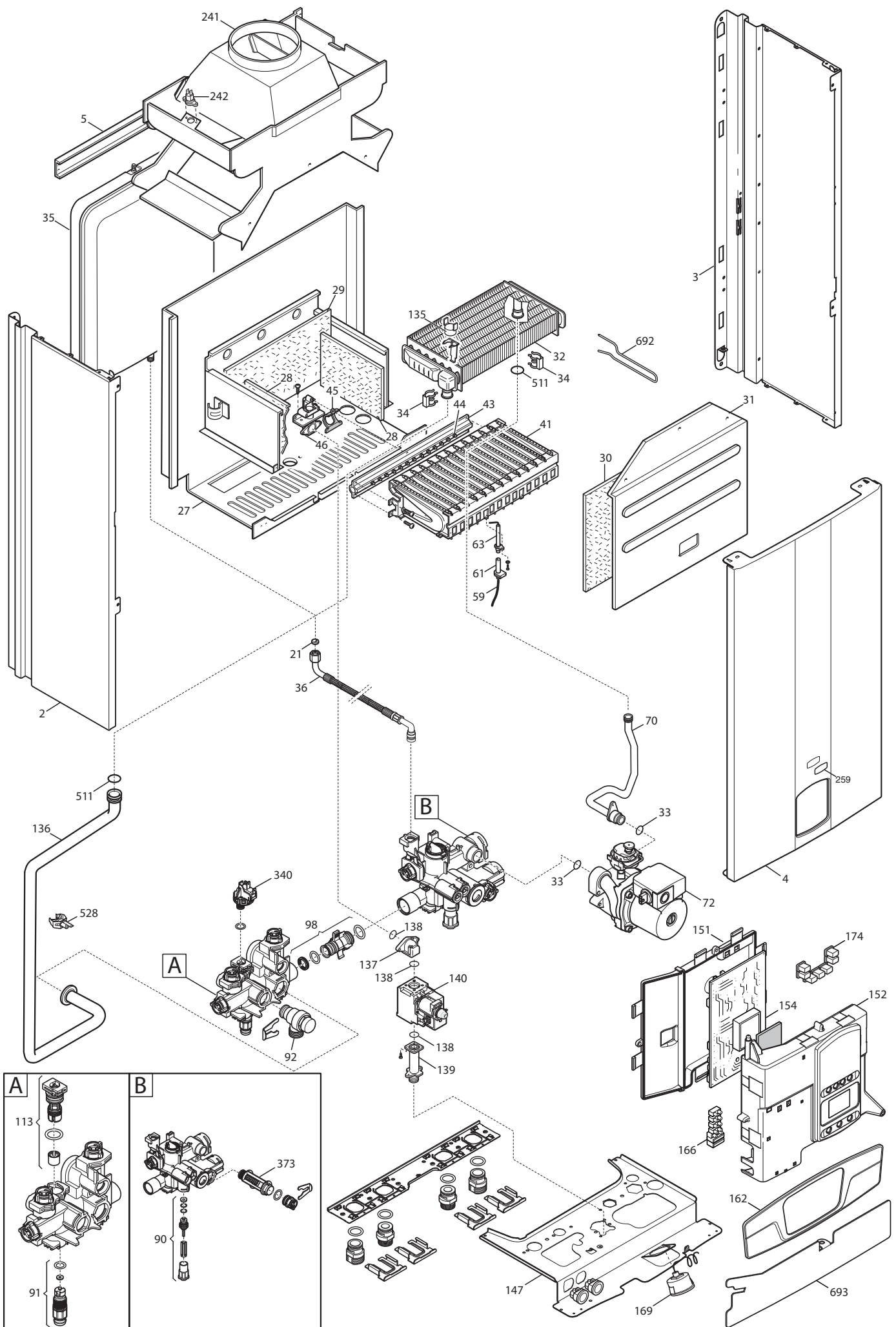
Tab 365



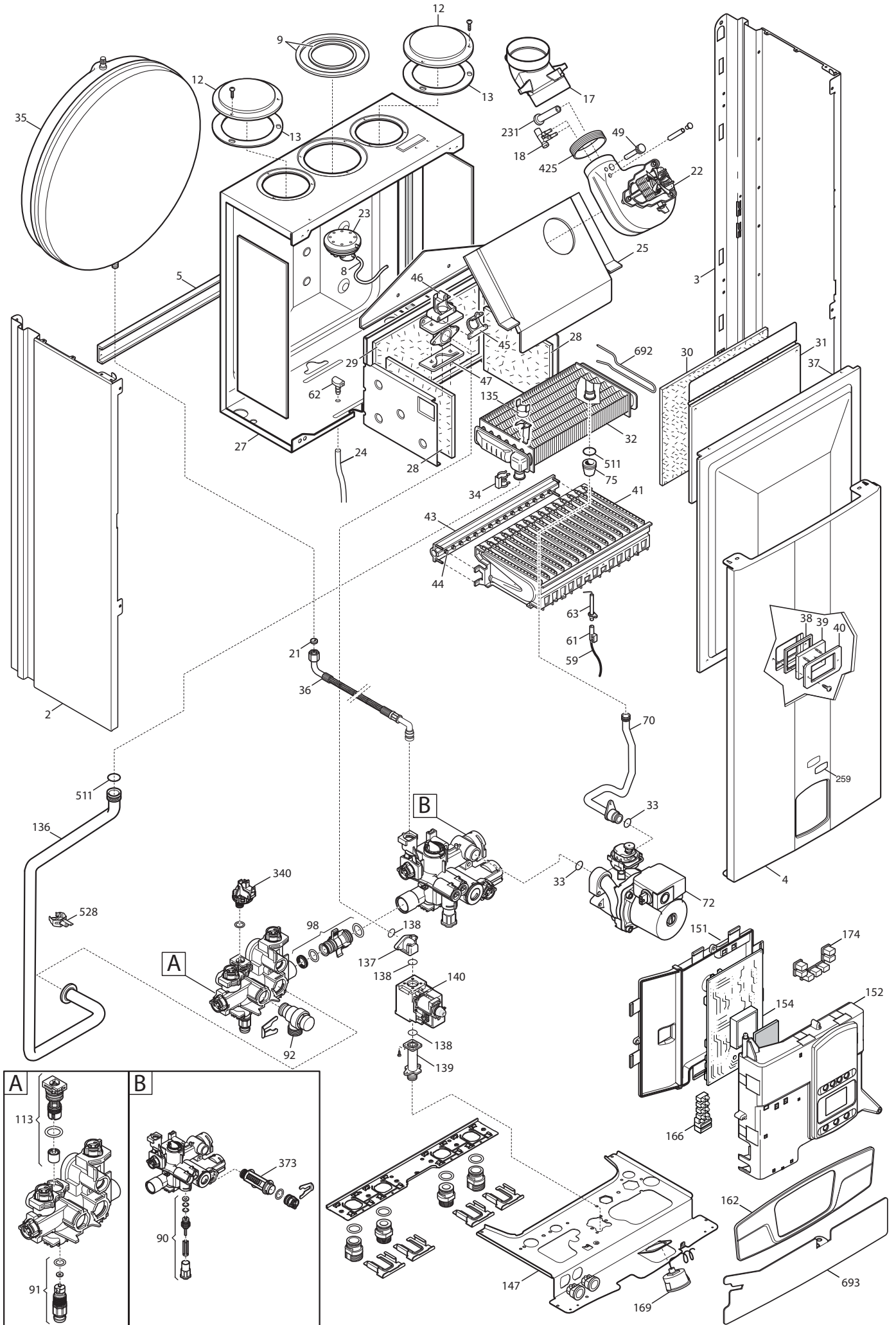
Tab 366



Tab 375



Tab 376



BAXI

BAXI S.p.A.
Via Trozzetti, 20
36061 BASSANO DEL GRAPPA (VI)
ITALY
Tel. +390424517111
Telefax +390424517379
E-mail. service@baxi.it